



研制阀门
YANZHI VALVE



专业锻件制造商

PROFESSIONAL
FORGINGS
MANUFACTURER



温州市研制阀门厂
WENZHOU YANZHI VALVE FACTORY

地址:温州市滨海园区通海大道5-6道
ADD: 5-6th road Tonghai avenue Binhai Industry Zone, Wenzhou
电话(TEL):0577-86815588 传真(FAX):0577-86817104

2017 研制阀门版权所有,产品有专利保护,侵权必究法律责任。
本样本仅介绍了部分产品,另若有改动,恕不通知,请联系我司索取最新版本。

135 677 86016

专业锻件制造商

PROFESSIONAL
FORGINGS
MANUFACTURER



YANZHI VALVE
SERVING THE WORLD

Professional Forgings Manufacturer

总经理致辞

Speech of General Manager

真诚谱写一种感动，一种拼搏和执着铸就一段辉煌历史，一个温馨的家园实现公司人共同的梦想。

研制全力投入到市场经济改革之中，在瞬息万变的市场中以其独特的经营方式、先进的科学技术、顽强的拼搏精神、真诚的合作意识，不断探索着一条属于自己的道路。

我们本着“真诚服务，真心奉献”的原则，把顾客的要求视为自己工作的标准，向着“与世界同步，创中国第一”的目标，肩负着“兴民族工业，创人类健康”的使命而不停的奋斗。

研制是联系你我他的友谊桥梁，是有志青年放飞希望实现理想的沃土；是五湖四海有志之士施展才智的舞台；“研制”给智者以勇气、给敬业者以坚强，让更多的理想变为现实，让更多的抱负结出硕果！

研制，放飞您的梦想！

The honesty composes the feeling of moving, a struggle and a persistence, to create a brilliant history, one warm home realizes the common dream of the whole staff.

YANZHI is all in for the market economy reform, in this fast changing market, continues to discover its own path with special management mode, advanced technology, indomitable fighting spirit and sincere cooperation sense.

Based on the principles of Honest Service and Sincere Dedication, regards the requirements of customers as its work standards, propels forward the goal of Keeping Pace with the World, Creating China Number, and bears the mission of Flourishing the national industry and Creating the health of human kind.

of the youth to fly and realize the dream; is a stage of persons of vision to exert their wisdom and abilities; YANGZHI gives the courage to the wisdom and offers adamancy to the dedicating, makes more dream come true and enables more aspirations to gain fruitful result!

YANZHI, Flying your dream!

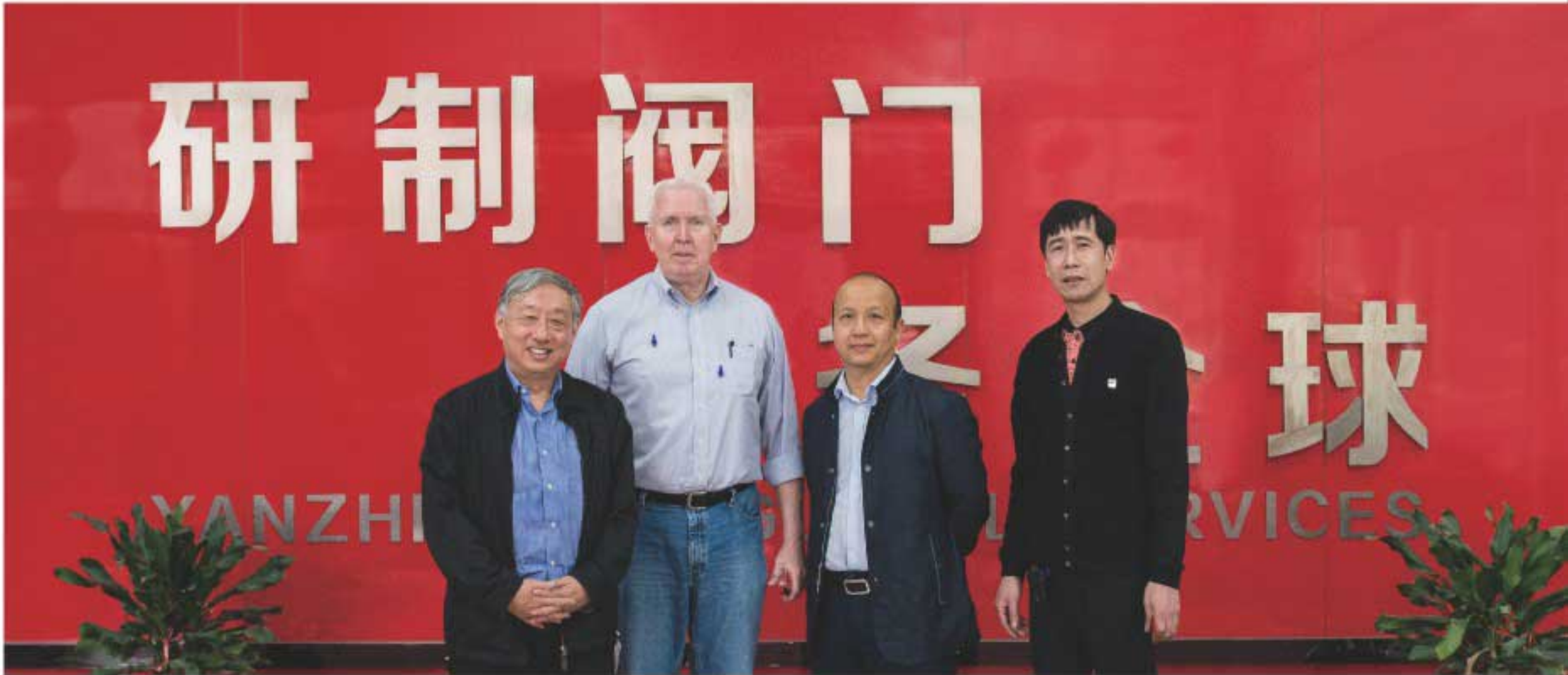


YANZHI VALVE SERVING THE WORLD



关于我们

ABOUT US



温州市研制阀门厂创建于1996年，位于中国改革开放城市，有着中国阀门城之称的温州市龙湾区，企业生产面积25000平米，注册资金2700万元，员工180人，专业技术人员20名；现年设计生产能力16000吨，是一家集设计、制造、销售、服务于一体的科技型现代化专业阀门锻造企业。根据企业的战略发展和长远目标结合市场需求，设有九条热模锻压生产流水线，年生产能力超1万5千吨的集现代化高科技管理和先进的生产工艺于一体且不断发展规模企业。

企业现有主要锻造加工设备：摩擦压力机J53型2500吨、1600吨、1000吨、630吨、400吨和630吨螺旋压力机及切边冲床等共79台，锻造辅助设备：快速自动锯料机、棒料剪切机、数控锯床、喷丸机25台及用于检测原材料和成品的检验、检测仪器11台套等。专业敦实的生产能力和先进的制造工艺以及完善的检测手段，确保产品出厂合格率达到100%。企业是“中国锻压协会”会员，2012年获得“国家质量监督检验检疫总局”核发的特种设备制造许可锻造专业的“TS”“A”级证书，并通过了ISO9001：2008国际质量体系认证，企业始终坚持“以客为本 以质求存 以优取胜 以精图强”优质诚信的经营理念，不断提高科学管理和工艺创新能力，保持持续高效发展，逐步成为浙南地区一家标准规范、规模层次较高的阀门专业锻造企业。

企业生产的主要产品有管道阀门、动车配件、汽车配件、履带铁齿等锻件，材质有：A105,LF2,LF3,F5,F9,F11,F22,F51,F91,304,304L,316,316L,F304H,F316H,F53,F55,F317,F317L,F347,F347H,F44,F904L,Q345,12CrMoV等，特殊钢：HASTELLOY C-276,Inconel625,Inconel600,MonelK500,Monel400,Incoloy825,20号合金等和有色金属材料等。产品销往欧美及韩国、日本等地；并长期与温州及国内知名阀门、动车配件、汽配、履带铁齿等制造厂家合作配套供应。

企业在迅速发展的同时，始终不忘注重企业自身素质和科学化管理水平以及创新能力的提高；我们将在持续发展、不断创新和壮大的过程中永无止境的努力，坚持一如既往地以一流的产品、一流的服务、一流的信誉与广大客户继续维持和发展友好和谐的合作关系，广泛开拓新市场，结识新伙伴，使生产销售的产品更加系统化、全面化、优质化，在激烈的市场竞争中求生存、谋发展。真诚希望与广大新老客户共同建立和持续发展互惠互利的合作关系，携手并进共襄辉煌前程。

Wenzhou YANZHI Valve Factory, founded in 1996, situates in Longwan district, Wenzhou City, where is well-known as the Chinese Hometown of Valves and a reformed and opened city, occupies a production area of 25,000sqm, has a registered capital of RMB2.7million and a staff member of 180 including 20 technicians; currently the designed annual yield reaches 16,000 tons, is a scientific/technological modernized & professional valve forging enterprise integrating the functions of design, manufacturing, sales and service. According to the development strategy, long-term target and market needs, it has set up 9 hot-die forging streamlines, is a developing scale enterprise with the annual production of over 15 thousand tons combining the modern high-tech management with advanced workmanship.

The current main forging equipments involve: 79 sets of friction press Model J53 2500t, 1600t, 1000t, 630t, 400t and 630t screw press and edge-cutting puncher, auxiliary equipments for forging include: 25 sets of quick automatic saw, bar sheer, digital saw bench and blaster and 11 sets of materials/finished products inspector or tester. The professional & solid production capacity and advanced manufacturing workmanship and sound inspection ensure the delivery qualification rate to attain 100%. The enterprise is the member of CONFEDERATION OF CHINESE METALFORMING INDUSTRY, in 2012, obtained the certification of TS Class A issued by General Administration of Quality Supervision, and passed the certification of ISO9001:2008 quality system, the enterprise always persists in the high-quality and honest management concepts of Customer Based, Quality-for-survival, Prevailed by Top Quality and Strengthening by Refining, improves constantly its abilities of scientific management and process innovation, maintains its continuous high-efficiency development, and gradually becomes a standard, high-scale and professional forging enterprise in South Zhejiang region.

Main products have pipeline valves, bulletin train accessories, auto parts, track iron core and other forgings, made from the materials such as A105, LF2, LF3, F5, F9, F11, F22, F51, F91, 304, 304L, 316, 316L, F304H, F316H, F53, F55, F317, F317L, F347, F347H, F44, F904L, Q345, 12CrMoV etc.,



Special steel: HASTELLOY C-276, Inconel625, Inconel600, MonelK500, Monel400, Incoloy825, Alloy 20 and non-ferrous metals. These products sell far to Europe, America, Korea, Japan and other nations, and it has established a long-term relationship with Wenzhou and domestic famous manufacturers for valves, bulletin train accessories, auto parts, track iron core to supply the supporting accessories.

As the enterprise rapidly develops, the enterprise always emphasizes on the improvement of its own quality, scientific management level and innovation ability; the enterprise persistently maintains and develops a friendly and harmonious cooperation relationship with vast clients during the process of sustainable development, continuous innovation and increasing growth with first class products, first class service and first class credit, furthermore, makes friends with new partners, so as to enable the products sold to be systemic, wholly and high-quality, seeks the survival and develops in the fierce market competition, sincerely expects to establish and develop together a mutual benefit cooperation relationship with great new & old clients for a brilliant future.

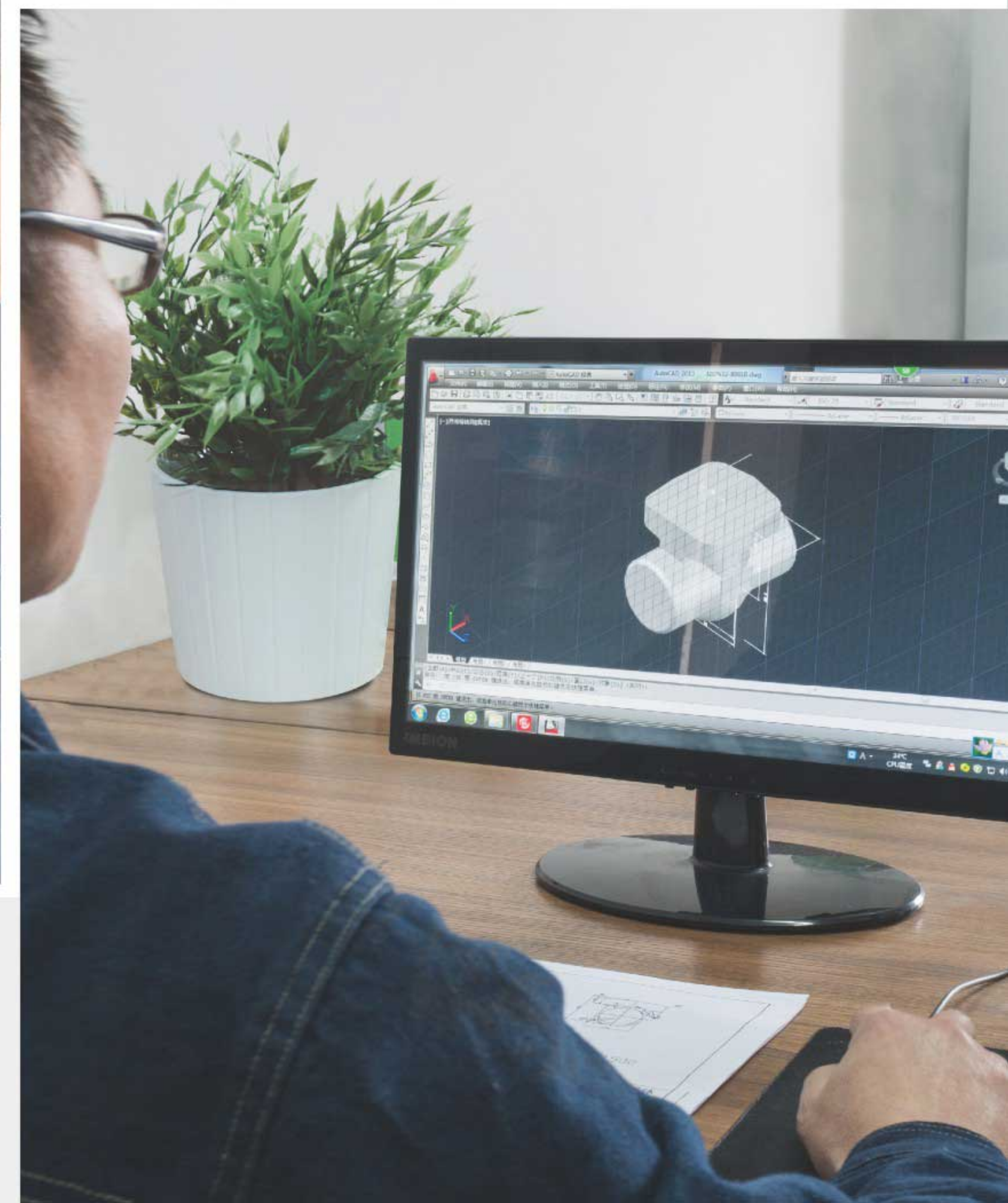


产品研发

R&D OF PRODUCTS

把握市场趋势，与时俱进，不断推陈出新，研制阀门保持着旺盛的生命力。在新时代的背景下，我们以“一带一路”为契机，以科研创新为依托，以产品质量为核心，与广大国内外厂商密切合作交流，为企业的发展打下坚实的基础。

Holds the market trend, keeps pace with the times, makes continuous innovation, and thus YANZHI Valve maintains its powerful vitality. Under the background of new ages, we will cooperate and exchange closely with vast domestic and overseas manufacturers, taking the opportunity of One Belt and One Road, relying on scientific innovation and centered in the quality of products, so as to lay a solid foundation for the development of the enterprise.



生产装备

PRODUCTION FACILITIES

材料标识 MATERIAL IDENTIFICATION

白色 A105	中黄色 F304	葱绿色 F304L	解放蓝 F316L	黑色 F321	嘉陵红 LF2	深蓝色 F11	银灰色 F22	葱绿+白色 F9	葱绿+黑色 F91
铁红 F5	铃木红 45#	中蓝色 20Cr	中黄+葱绿 40Cr	葱绿+红色 35CrMo	红色+黑色 F51	解放蓝+白色 Q345	解放蓝+黑色 12CrMoV	红色+中黄 F317	红色+解放蓝 F347



下料
Materials purchase

原料的好坏，
直接影响产品的质量。
研制从源头抓起，严格把关，
力求在起跑线上，
胜人一筹。

The quality of materials will have a direct
impact on the quality of products,
YANZHI strictly controls the raw materials
and makes every effort to excel
from the starting the line.



材料检验入库
Materials inspection and storage

天然气加热(30t/天)
Natural gas heating (30t/day)

生产装备

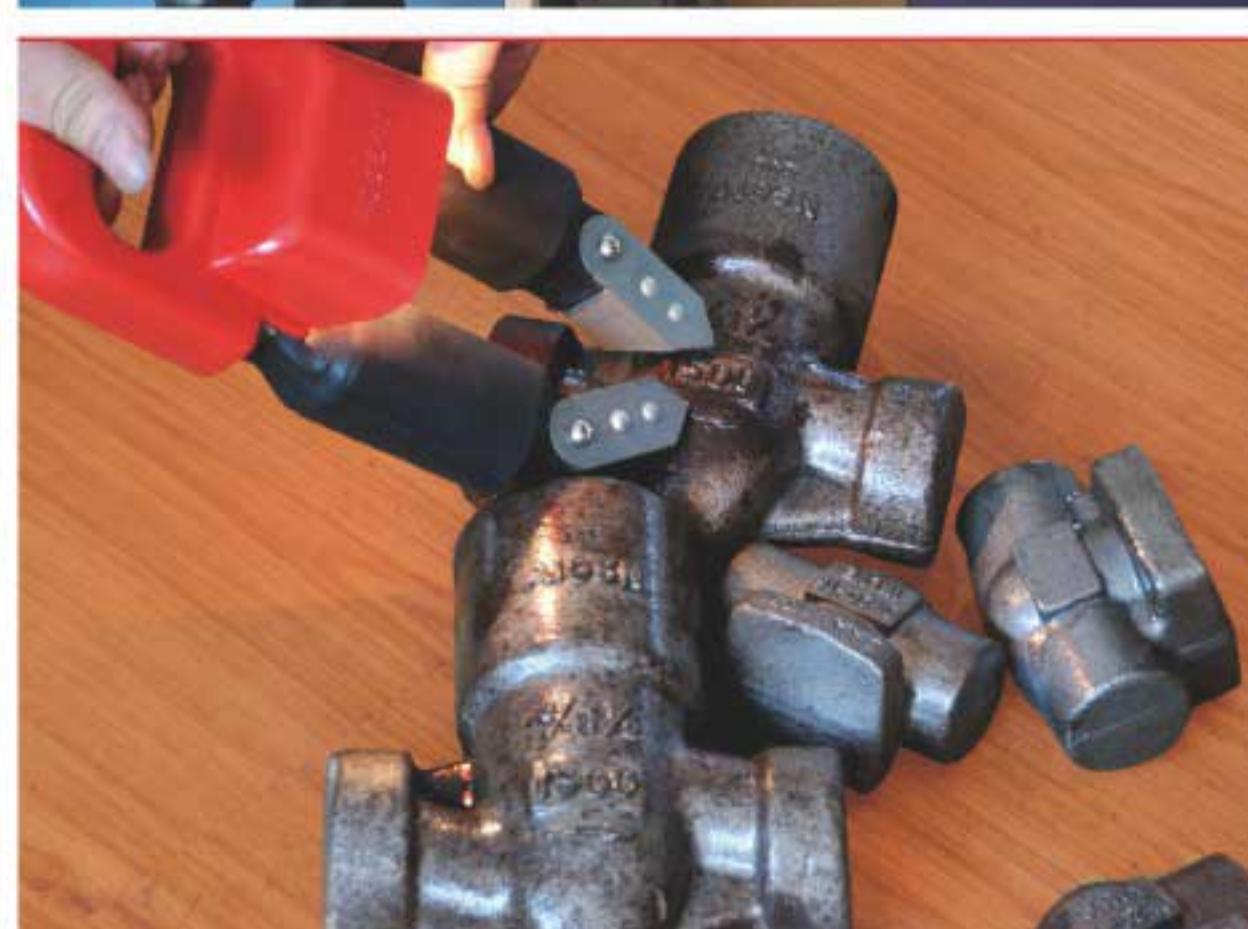
PRODUCTION FACILITIES

工欲善其事，必先利其器。
良好的管理，先进的理念，
优秀的人才，
再加上精良的设备才能拥有强大的生产实力，
才能保障卓越的产品质量，
才能在市场竞争中脱颖而出，
才能有更高的格局。
研制投入巨资引进先进的设备，
为打造优质的产品保驾护航。

A craftsman who wishes to do his work well must first sharpen his tools. The good management, advanced concepts, excellent personnel and exquisite equipments can make strong production capacity, guarantee the outstanding quality of products, become eminent in the market competition and have a better framework. YANZHI invests heavily in introducing advanced equipments to safeguard the constructing of high-quality products.

- 1 锻造一角(摩擦压力机J53-2500T)
J53-2500T forging angle of friction press
- 2 锻造一角(摩擦压力机J53-630T)
J53-630T forging angle of friction press
- 3 表面处理
Surface treatment





检测中心

INSPECTION CENTER

- ① 金相观察 Optical microscop
- ② 拉伸试验 Tensile test
- ③ 硬度检测 Hardness test
- ④ 冲击试验 Impact test
- ⑤ 光谱分析 Spectrograph
- ⑥ 磁粉探伤 Magnetic powder flaw
- ⑦ 尺寸检测 Size detection
- ⑧ 热处理 Heat-treatment
- ⑨ 着色探伤 Dye penetration inspection

为了提供高品质产品，研制配备了先进的检测设备以及完善的检测手段，建立了一只严格要求的品质管理队伍，实现了从原材料检测-生产过程检测-产品及应用全过程的质量控制。

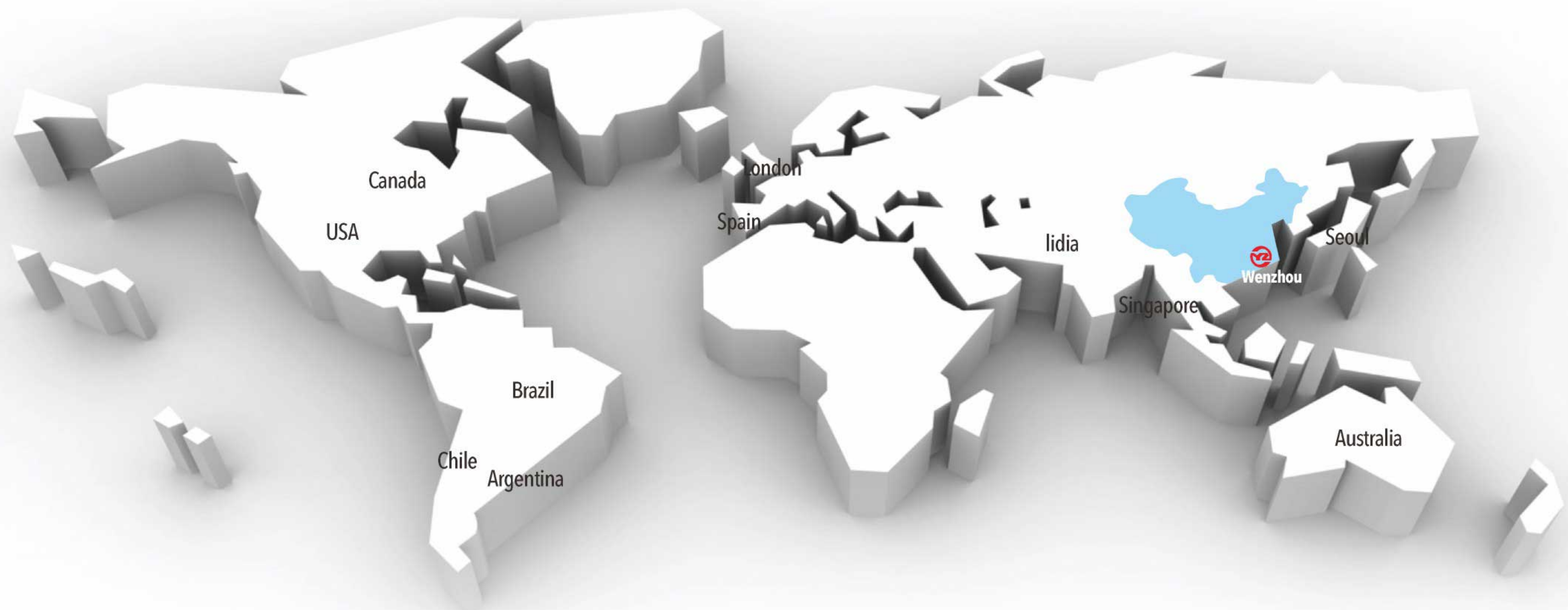
In order to provide high-quality products, YANZHI arms with advanced inspection devices and perfect inspection measures, builds a strict QC team to realize the quality control during the whole process including raw materials, production and products/application.

营销网络

Marketing Network

多年来，公司凭借“锐意进取”的企业精神，在市场的浪潮中把握前进航向；在信息的风暴中提炼管理智慧。我们将一如既往地探寻新领域、新空间，寻找一切突破发展的可能性……

For several years, depending on forging-ahead spirit, the company grasps the direction of marching forward; refines the management wisdom in the information storm. We will continue to explore new field, new space and find all possible development opportunity...



PRODUCTS SHOW

连体(2500)-2
Connector(2500)-2



自密封
Self-sealing



自密封阀体
Self-sealing valve body



自密封连体
Self-sealing connector



PRODUCTS SHOW

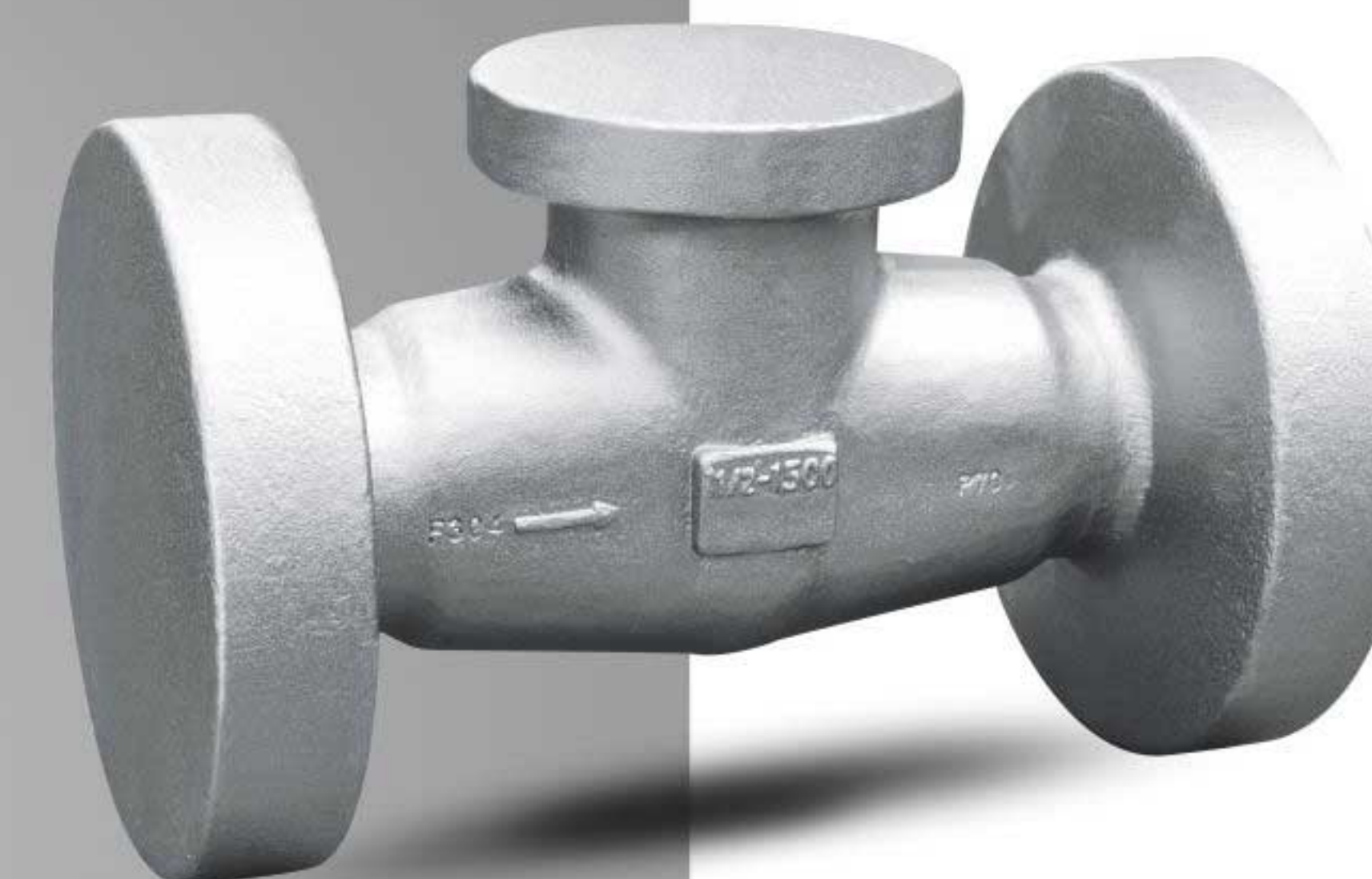
支架
bracket



连体支架(1500LB)
Connector bracket(1500LB)



连体(1500LB)
Connector(1500LB)



PRODUCTS SHOW



汽配-1
Auto parts



汽配-3
Auto parts



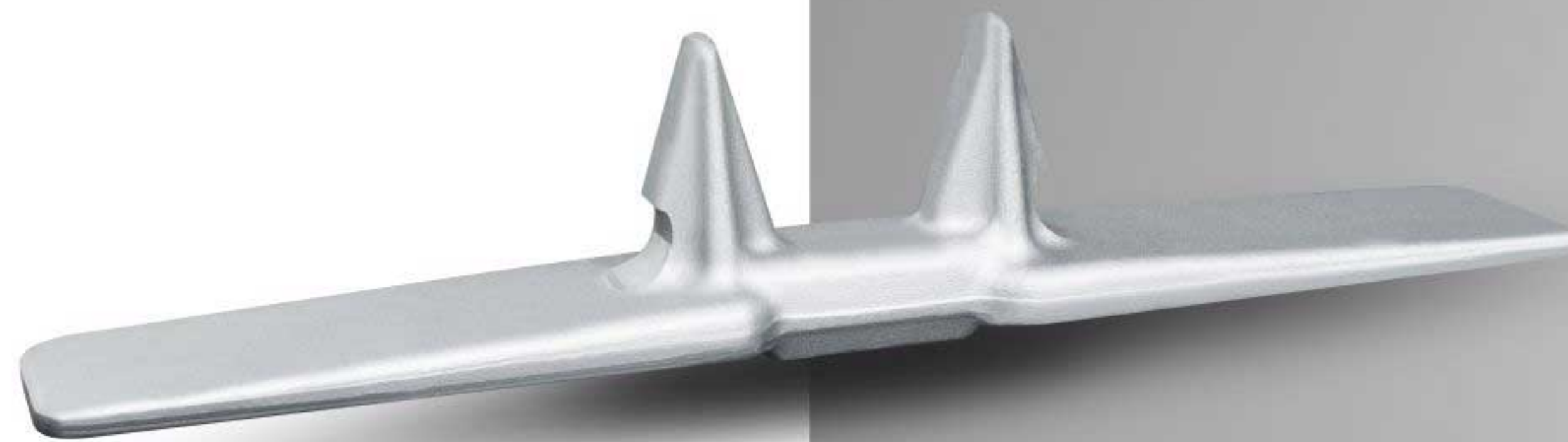
汽配-2
Auto parts



汽配-4
Auto parts

PRODUCTS SHOW

铁齿-1
Iron core



高体
valve body



铁齿-2
Iron core



支架-4
bracket



阀体-4
valve body



PRODUCTS SHOW

上装式球阀
Top-mounted ball valve



过滤器
Filter



波纹管阀体
Bellows valve body



Y型自密封阀体
Y-shaped self-sealing valve body



PRODUCTS SHOW

连体(150LB)
Connector (150LB)



连体(300LB)
Connector (300LB)



连体(600LB)
Connector (600LB)



低温杆支架
Low-temperature bar bracket



蝶板
Butterfly board



PRODUCTS SHOW

自密封阀体
Self-sealing valve body



中部螺栓支架(2500LB)-1/2
Middle bolt support(2500LB)-1/2



自密封
Self-sealing



连体(2500LB)
Connector(2500LB)

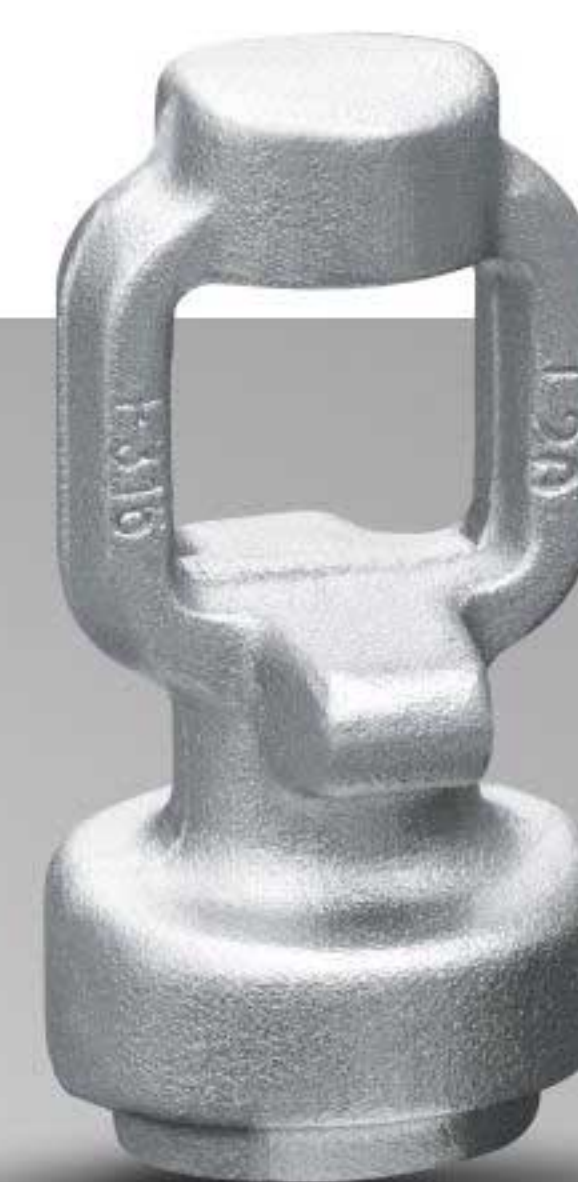


PRODUCTS SHOW



整体球阀
Integral ball valve

中部焊接支架
Middle welding support



气动球阀
Pneumatic ball valve



三片式球阀
3-PC ball valve



PRODUCTS SHOW

圆Y型-1
Round Y shaped



整体对焊阀体-1
Integral butt welding valve body



整体对焊支架
Integral butt welding bracket



PRODUCTS SHOW



三通旋塞阀
Three-way plug valve

自密封压盖板
Self-sealing gland board



单边连接法兰波纹管阀体
Single-sided connecting flange bellow valve body



自密封链接连体
Self-sealing linking connector



自密封支架
Self-sealing bracket



产品展示

PRODUCTS SHOW

法兰
Flange



法兰
Flange



企业证书

Enterprise Certificate

